



What is an aquifer, and why does it matter to me?



<https://wearetap.org.uk/>

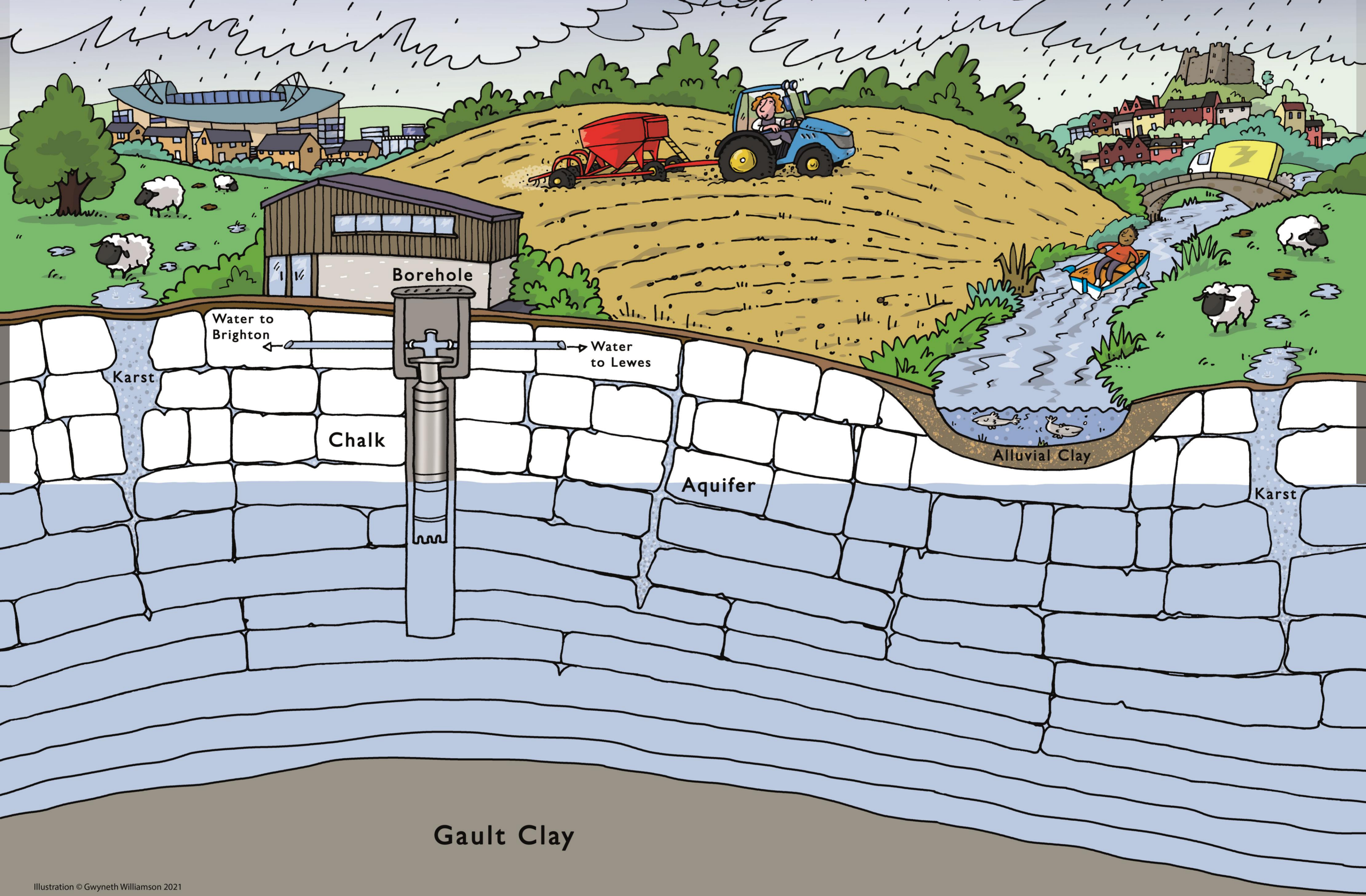


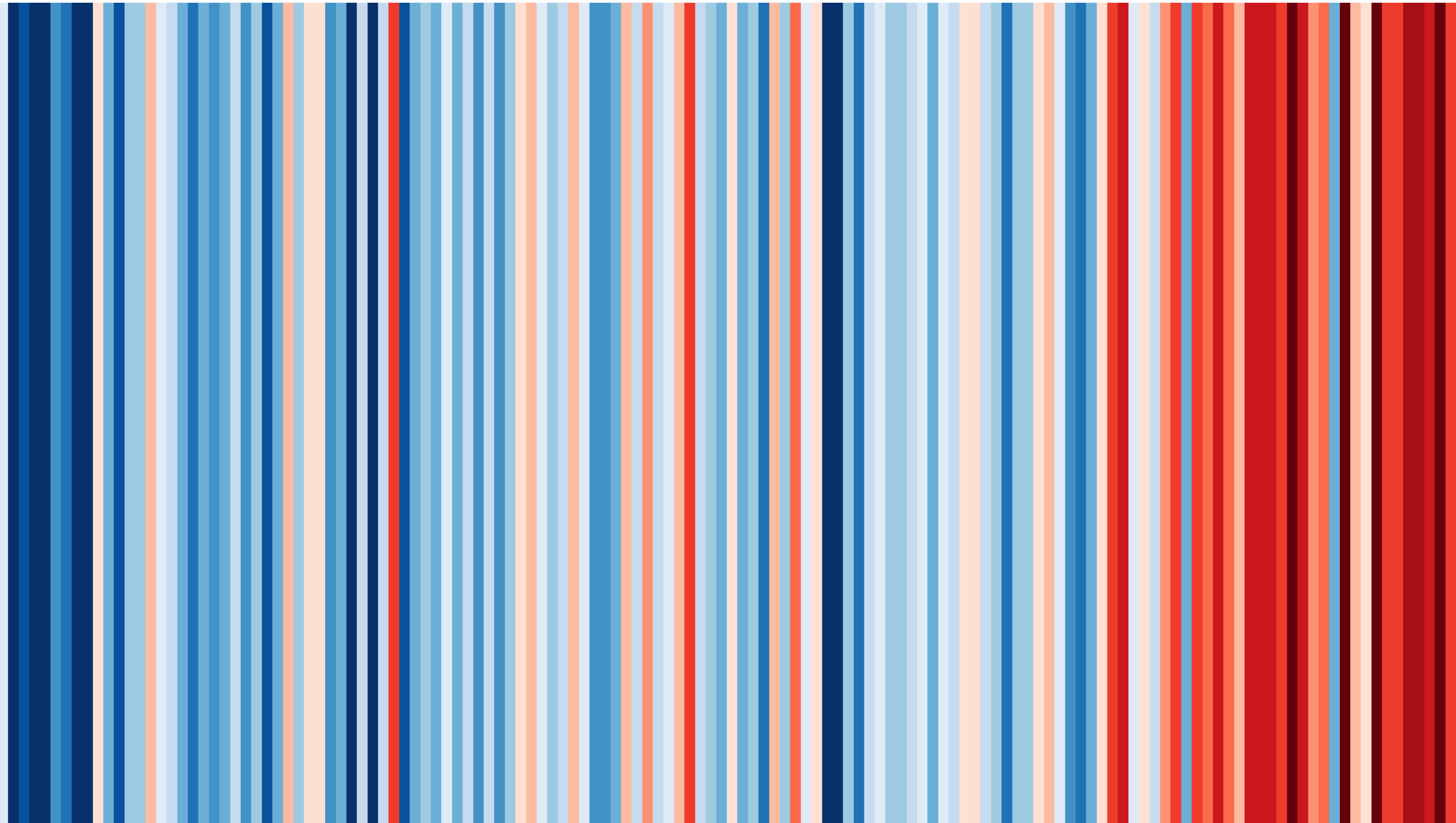
Illustration © Gwyneth Williamson 2021

In the south east around 70% of our drinking water comes from groundwater

In and around Lewes 100% is from groundwater

Using catchment management to address pollution issues

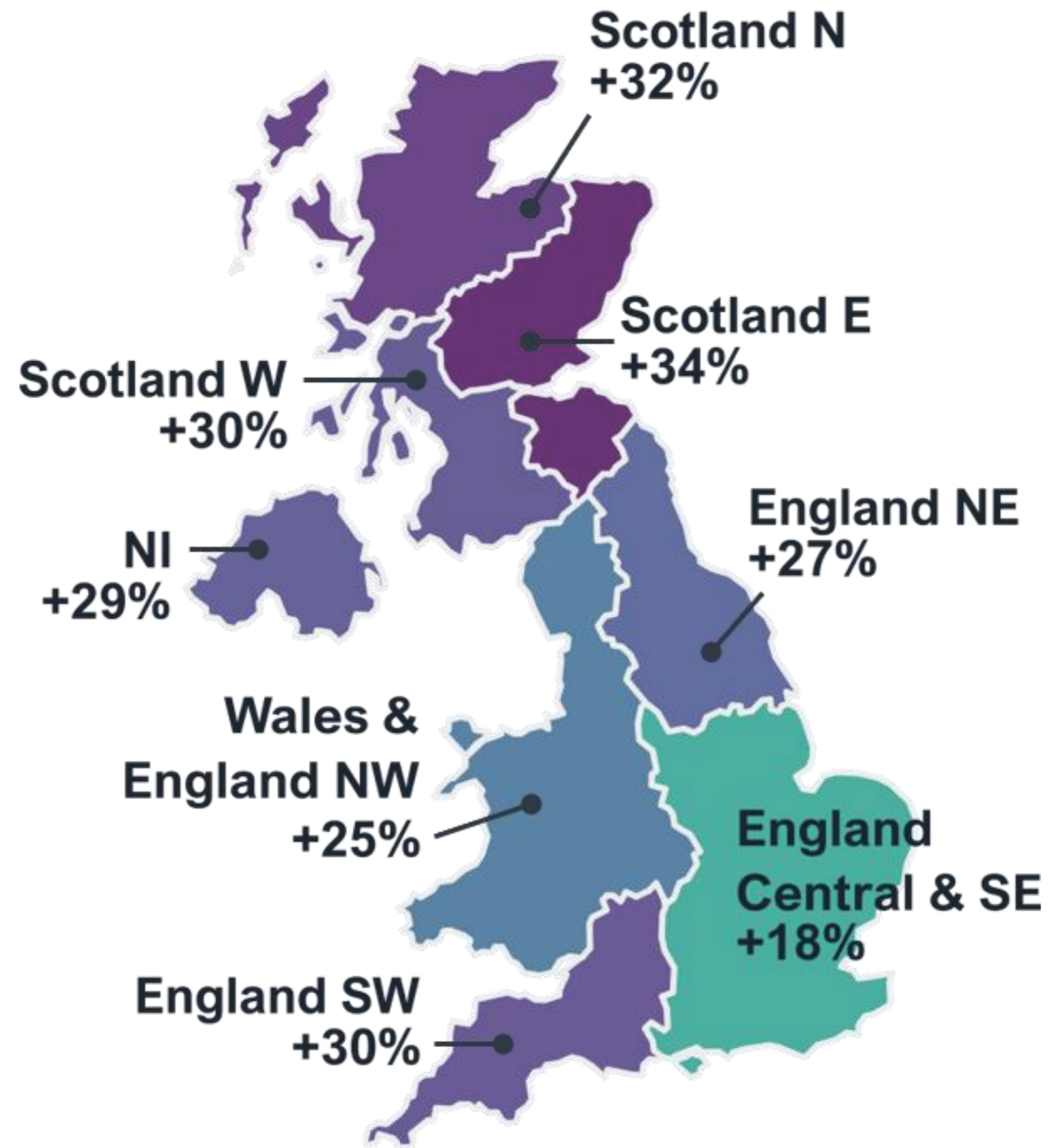
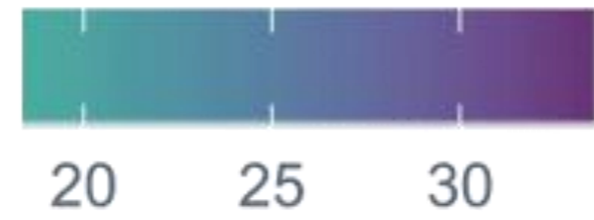




showyourstripes.info



Increase in flooding
by 2080



Water Resilient Cities @ Heriot-Watt University

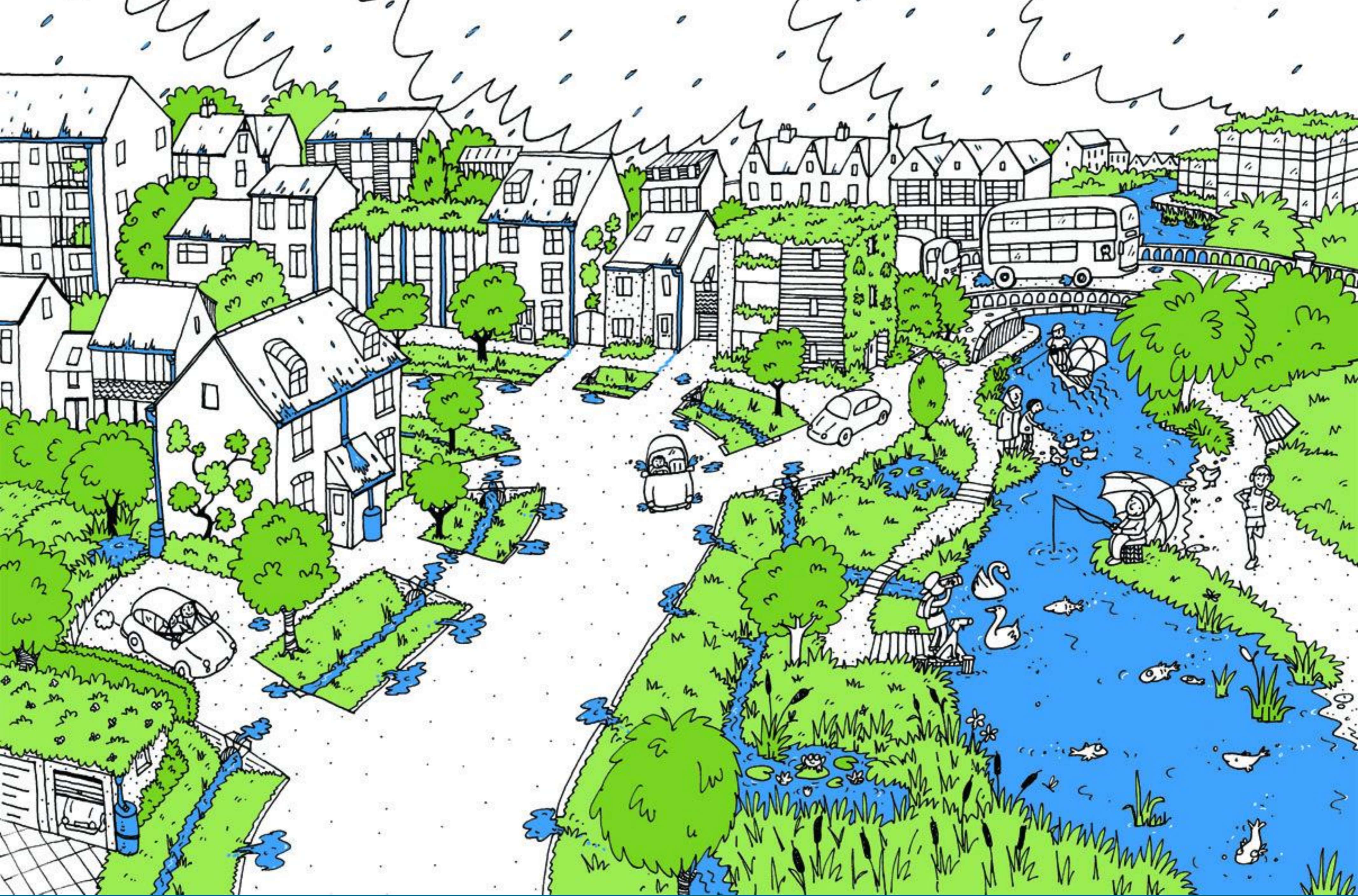


📷 A satellite image of the UK taken on 10 August 2022 shows swathes of scorched brown. Photograph: Met Office/Crown copyright/PA

Global Bio Stripes: findingnature.org.uk - Data: LPI 2022. Living Planet Index <http://stats.livingplanetindex.org>





















3.0 Biodiverse Meadow Basin



Emorsgate EL1 - Flowering Lawn Mixture



Galium verum



Leontodon hispidus



Leucanthemum vulgare



Lotus corniculatus



Primula veris



Prunella vulgaris



4.0 Rainwater Planters Shrub and Herbaceous Beds



Epimedium x rubrum



Stachys byzantina



Perovskia 'Blue Spire'



Rosmarinus officinalis
'Prostratus'



Polystichum setiferum
'Herrenhausen'



Anemanthele lessoniana



Deschampsia cespitosa



Nepeta racemosa 'Walker's
Low'



Helictotrichon sempervirens



Alchemilla mollis



Geranium 'Mavis Simpson'



Phlomis russeliana



Geranium palustre



Vinca minor 'Bowles
Variety'



Lavandula angustifolia
'Imperial Gem'



Hebe 'Green Globe'



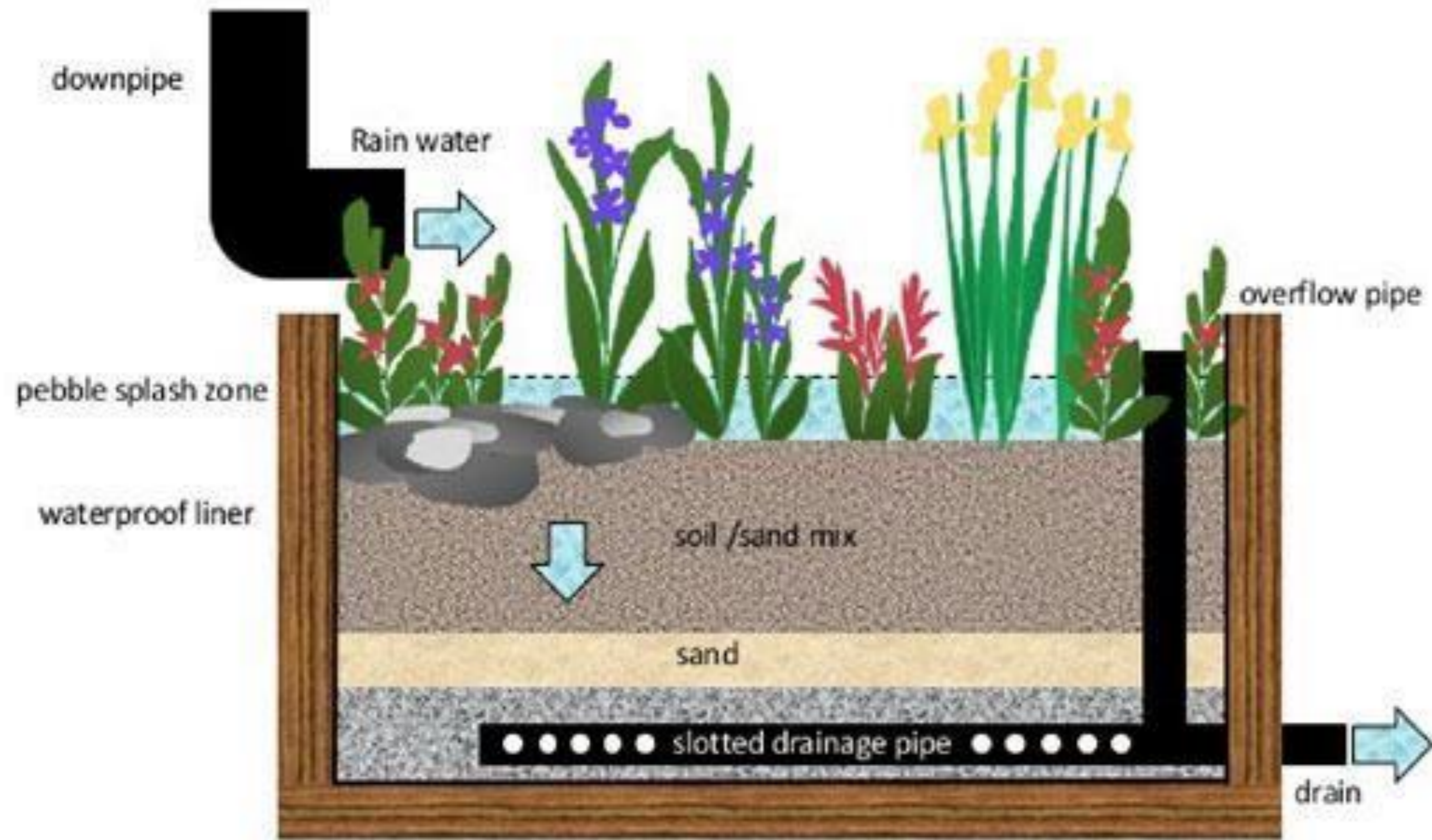












wearetap.org.uk/creating-a-rain-garden/



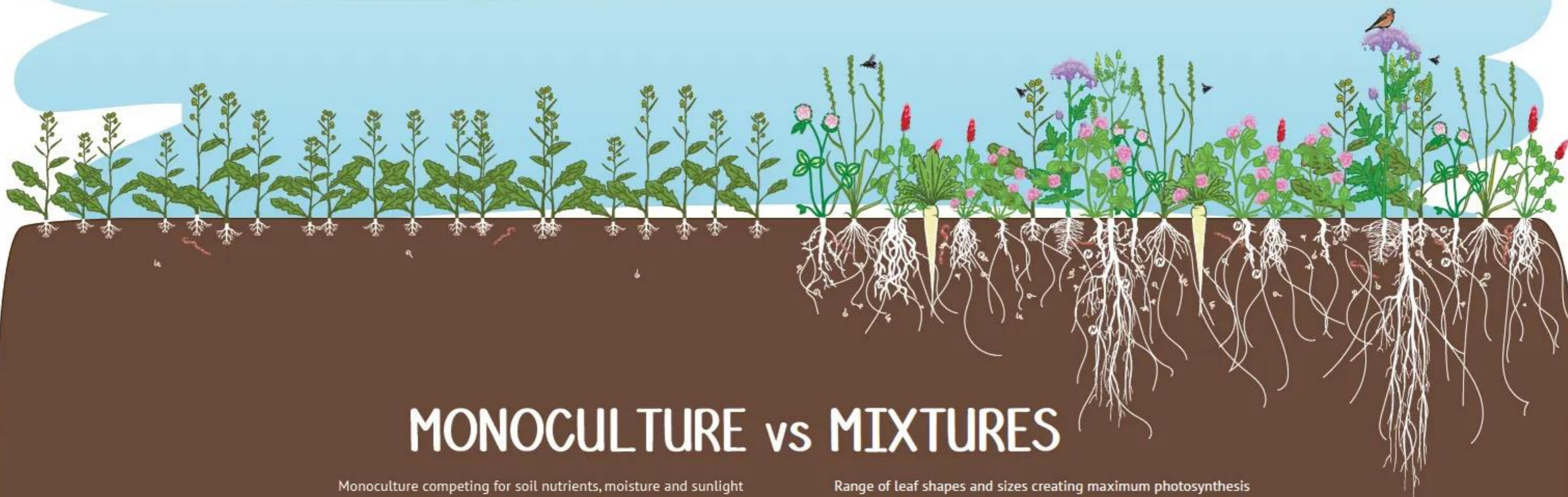
Planted with grasses and flowering perennials, rain gardens are not only a pleasant feature, they attract wildlife, such as butterflies, pollinators and birds. If they are collecting water from a hard surface, they can also help to treat low-level pollution.

Rain gardens are usually able to absorb all the rainwater they collect, however in storm events it is important that there is a means for water to escape into the existing drains. The rain garden is still helpful in this case. By slowing the flow it helps to regulate the amount and speed of the water, so the drains are better able to cope.

Even providing a small amount of extra capacity, you are helping to **slow it down ... soak it up!**

SORT OUT YOUR SOIL

Green crop mixes are set to become a bigger part of crop rotations. They offer massive improvements to soil fertility.



MONOCULTURE vs MIXTURES

Monoculture competing for soil nutrients, moisture and sunlight
 Prone to disease and pests
 Uniform root depth and structure

Range of leaf shapes and sizes creating maximum photosynthesis
 Less susceptible to pests and diseases
 Varied rooting depth, different shapes improving soil structure
 Mixing early and late species extends the growing season
 Increasing diversity of pollen and nectar sources offers more choice for pollinators

...give 50% more yield



