



Spring Newsletter – May 2026

Brighton and Hove Green Spaces Forum (BHGSF) is a volunteer organisation providing an independent voice and communication hub for volunteer groups working with Brighton & Hove's parks and open spaces.

INTRODUCTION

Welcome to our Spring Newsletter. On 20th January the Forum held its Early Spring Seminar at the Friends Meeting House in Brighton. It was a great evening with speakers Leah Salm (Bite-sized biodiversity), Jean Griffin (BBC Radio Surrey & Sussex), Rob Boyle (Head Gardener at the Royal Pavilion), Sarah Dobson (Brighton & Hove UNSECO Biosphere) and our Wildflower Conservation Society. It was also a wonderful opportunity for our members to meet up and share experiences. We are starting to think about how to make next year's seminar one worthy of the Forum's tenth anniversary - ideas are welcome!

Following our AGM on 25th February, the Forum Chair held a meeting with CityParks on 10th April. This to clarify the current situation re their priorities plus the support they give to the green space volunteer community. Notes from this meeting were emailed to all members on 25th April.

Copies of the Early Spring Seminar slides and AGM Minutes can be viewed on our website at <https://bhgreenspaceforum.org.uk/resources/>

One of the Forum's objectives this year is to ensure our member records are accurate. This will help new volunteers when looking for a group, plus ensure you get everything you need from us. So if your group records on our website at <https://bhgreenspaceforum.org.uk/friends-of-groups/> are out of date in any way, please email us at bhgsforum@gmail.com and we will update them. We will be sending out a very short questionnaire on this, plus to get a view of any specific help member groups might need.

This Newsletter provides a round-up of the latest news and activities from many of our members groups and supporters. Thank you to all those who have contributed, your news is always welcome and your efforts appreciated. Please remember if you want to publicise your activities, please email us at bhgsforum@gmail.com for inclusion in the Events Calendar on our website at <https://bhgreenspaceforum.org.uk/> or for communication on our Forum Facebook page at <https://www.facebook.com/bhgsforum/>

Contact details for all Forum groups can be found at <https://bhgreenspaceforum.org.uk/friends-of-groups/>

Finally, we'd like to extend a warm welcome to our two newest member groups, Friends of Hodshrove Woods and the Woodvale Volunteer Group. Both of who have submitted articles for this Newsletter.

100
YEARS



Campaign to Protect
Rural England
Sussex

CPRE SUSSEX - TREE FESTIVAL 2026: Celebrate Sussex Trees

Step into nature and discover the extraordinary world of trees at the Tree Festival 2026, running from late May to mid-June across the county. Building on last year's success, this vibrant, community-led festival brings together an expanded programme of walks, talks, creative workshops and family-friendly events in towns, parks and countryside locations.

With something for all ages, you can explore ancient woodlands, uncover the stories of rare and "champion" trees, and enjoy guided walks led by leading experts, ecologists and local enthusiasts. Families can dive into hands-on experiences, from forest school sessions and storytelling adventures to art, craft and interactive nature discovery. Most events are free or low-cost, making it easy to get involved.

Highlights include a family-friendly talk and walk with renowned Sussex naturalist Michael Blencowe and a Tribute to the Trees in Preston Park, Brighton. Events are taking place throughout May and June. New for 2026 are even more immersive and creative events, including writing and art workshops in nature, celebrations of city trees with music and performance, and opportunities to encounter wildlife and even prehistoric tree fossils. View the full programme and book your tickets here <https://www.cpresussex.org.uk/tf26/>



The much-loved photographic competition and exhibition also returns, inviting you to share your personal connection to trees. See full details at <https://www.cpresussex.org.uk/TF26/photographic-competition/>

CPRE SUSSEX – PLANT YOUR POSTCODE (PYP)

With this winter's tree-planting season now closed, we are very happy to report that we have planted/are in the process of planting 4 new street trees in Compton Road, Bavant Road and Florence Road as part of our Plant Your Postcode project. A Turkish Hazel on Compton Road (to accompany the one we planted in 2022), a Hornbeam on Bavant Road and Ginkgo and Lime trees on Florence Road - to replace two very unsightly stumps.

We are thrilled to continue supporting residents wanting to plant in their streets and look forward to fundraising for our newer PYP campaigns - including Jesmond Road in Hove and our new "green up" South Portslade project. We also have been involved in supporting residents' groups in streets such as Pembroke Crescent to get their Elm trees vaccinated - which will be happening over the next few weeks.

For more information on our PYP projects please visit www.cpresussex.org.uk/plant-your-postcode

Jen Eneke, Plant Your Postcode Project Manager, CPRE Sussex



BRIGHTON & HOVE COMMUNITY GARDEN MONTH – ‘Routes to Roots 2026’



Explore Brighton & Hove’s Community Gardens throughout June. This June, 20 community gardens and allotments across Brighton & Hove will open their gates as part of Brighton Hove Community Garden Month. This city-wide programme of Open Days invites residents, families and visitors to explore and take part in some of the city’s most inspiring green spaces. From hidden urban plots to thriving community hubs, each garden offers a unique glimpse into the creativity and care behind Brighton & Hove’s community growing network.

Visitors can meet local volunteers, discover how food and flowers are grown year-round and pick up practical tips on composting, wildlife-friendly planting and sustainable gardening. These shared spaces support wellbeing, bring people together and strengthening local connections.

Every participating garden will host at least one Open Day during June, making it easy to drop in, explore and get involved. This year’s programme is supported by Brighton & Hove Buses, helping people travel easily and sustainably between gardens across the city.

For full details of dates, sites and times visit <https://www.buses.co.uk/routes-to-roots>

Community Garden Month - Launch Event - 2pm on Saturday 23rd May

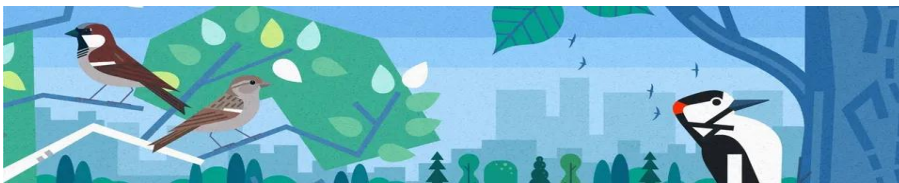
You are warmly invited to the launch event for the Community Garden Month which is being hosted by Round Hill Community Pocket Park (junction of Ditchling Road / Prince’s Crescent, Brighton BN2 3RA.

It will bring together the Mayor, our partners, stakeholders, and members of the community to celebrate the start of this city-wide initiative. This year’s event is supported by our sponsor, Brighton & Hove Buses.

Event highlights <https://www.buses.co.uk/routes-to-roots>

- Welcoming addresses from Cllr Theresa Fowler, Mayor of Brighton & Hove, and Jean Griffin, garden expert and reporter for BBC Radio Surrey, Sussex and Kent; Judge and Trustee for S&SE in Bloom.
 - Opportunities to meet and talk with representatives from 20 community gardens from across the city.
- Please confirm your attendance to bhcgcn@yahoo.com by 15 May 2026, including your organisation or group name and the number of people attending.

BRITISH TRUST FOR ORNITHOLOGY



The BTO Birds in Greenspaces project will run from **1 April to 30 June 2026** and aims to find out just how important greenspaces are for UK birds, and provide guidance on effective greenspace management for birds and people. See how to take part and sign up here.

<https://www.bto.org/get-involved/volunteer/projects/greenspaces/taking-part>

The BTO would like you to **count the birds** you observe in one or more local **greenspace(s)**. You simply need to tell them which greenspace(s) you visited, how long you spent there, and **which birds and how many** of them you observed. You can record your data using their brand-new mobile phone app or using a paper recording form if you'd rather submit your data on a computer later on.

National Federation of Parks and Green Spaces

supporting grass roots

NATIONAL FEDERATION OF PARKS & GREEN SPACES

The National Federation of Parks and Green Spaces (NFPGS) work with the dynamic and inspirational grassroots movement of over 6000 local Friends of Parks groups supporting volunteers who act on behalf of the communities who use and care about our vital public green spaces of all kinds. They exist to represent their activities issues and concerns and strengthens their passionate and knowledgeable voices.

The following is a case study carried out in 2019 with Brighton & Hove Green Spaces Forum who had been launched in 2017 and became members at that time. Case study <https://natfedparks.org.uk/wp-content/uploads/2019/12/2019Forums-Case-Study-BrightonHoveGreenSpacesForum.pdf>

The latest NFPGS Newsletter can be seen at <https://mailchi.mp/3da08a1e72f6/spring-2024-update-17996020?e=98db6f4769>

The NFPGS is encouraging all its members to support **Plantlife's No Mow May 2026 campaign** as it is one of the most straightforward things your group can do for local nature this spring. Let the grass grow and give wildflowers like dandelions, daisies, clover and buttercups the chance to bloom! Our lovely bees depend on them to get a vital early season food source at exactly the moment they need it most.

It is not widely known but May is one of the scarcest periods for nectar and pollen, coming before the full flush of summer flowers. Bees, butterflies and other insects are expanding their populations at this time of year, and a patch of unmown grass can be the difference between a thriving colony and a struggling one. Research by Plantlife has found that simply letting lawns grow through May can increase the number of flower species present and dramatically boost the amount of nectar available to insects.

Sign the pledge and download the free No Mow May guide → plantlife.org.uk/campaigns/nomowmay

PLOT 22 (Weald Allotments, Weald Avenue, Hove)

We'd love to share our upcoming workshops at Plot 22.

Alongside regular sessions, Plot 22 hosts a range of special workshops and events. Plot 22 Book club (ticket), Nature Based Lino Cuts (ticket), Meditation and Tarot (ticket), Meditation and Quiet Garden (free)

<https://www.plot22.org/plot-offerings/p/meditation-xmp5y>

Nature writing workshop (ticket) Nature of Poetry (ticket) and more..

<https://www.plot22.org/workshops>

Plot 22 have been continuing Little Plotters season – There is also an activity club for younger Plot 22 members - as well as sending activity packs to local schools they are now working on some in-person sessions with schools this term. You can read more about Little Plotters here [Little Plotters — PLOT 22 Community Garden](#) and activity packs can be ordered here to join in at home [Little Plotters Activity Pack — PLOT 22 Community Garden](#)



More about Plot 22 can be seen on their website at <https://www.plot22.org/>
Grace Sankey

WOODVALE VOLUNTEER GROUP (Woodvale & Portslade cemeteries)



Woodvale Volunteer Group are delighted to have become members of Brighton & Hove Green Spaces Forum. We work in the city's cemeteries, helping the council with an array of tasks that would never be completed if not for our volunteers, for whom we are ever in their debt.

Working closely with Bereavement, Cityparks and the Outdoor Events Teams we strive to make our local green space cemeteries an asset the community can visit and enjoy.

Our volunteers have doubled the number of benches in Portslade Cemetery, rebuilt flint stone walls at Woodvale, uncovered lost graves, held open days and walking tours of influential graves, such as Dorothy Stringer and John Urpeth Rastrick. We have moved over 100 tons of green waste to recycling and assisted in developing bio-diverse areas to encourage local wildlife. I struggle to estimate how many miles of grass have been mowed.

Pictured here are the graves of Surgeon-General Edward McKellar MD of the Bengal Cavalry, restored in 2025. This magnificent cross was in four pieces prior to a visit to our workshop. The long lost of grave of 17-month-old Leslie John Methold who passed on 21st July 1901. The entire grave was raised 7 inches and would never have seen the light of day if it were not for our mowing schedule.

Regardless of age or ability, we believe that we can find a little something for anyone with a will to work. Come, join us.

www.facebook.com/woodvalevolunteergroups/
M: 07799 888877



FRIENDS OF ST AYBYNS POCKET PARK



Residents of St Aubyns in Hove are seeking funding and public support to transform two street corners currently occupied by communal bins into a green "pocket park". Supported by Brighton University students, the project aims to improve the maritime-friendly green space, repave the area, and disguise relocated bins with a sculptural wall. Voting for the proposal, funded by developer contributions, is open on the city council website until May 5th.

Sue Kalicinska, from Friends of St Aubyns Park, said: "This community-led project is aiming to transform the southern end of St Aubyns, adjacent to the Kingsway, into a green and pleasant space for all to enjoy.

Sue Kalicinska MBAC 07768 322795



<https://yourvoice.brighton-hove.gov.uk/en-GB/ideas/planting-material-for-the-proposed-pocket-park-at-junction-st-aubyns-kingsway-sway>

FRIENDS OF CRAVEN WOOD

Nestled within Whitehawk Hill Nature Reserve is our peaceful woodland haven where native trees, wildflowers and sweeping views invite you to slow down and reconnect with nature. We continue to enjoy our monthly sessions on Saturday mornings and have benefited from several new volunteers responding to the notice-boards we put up last year. This last session saw us construct our first 'dead hedge', designed to be attractive to insects, hedgehogs and nesting small birds - it also gave us a space for sycamore regrowth that we felt had overstayed their welcome! Despite the evidence of the photo, we did actually have six other volunteers making the hedge! We have plans for at least one more.



We are also planning - over time - to replace many of our 100+ oak steps on our steeply-sloping site, having obtained a small grant for this purpose. Most of them were installed around 12 years ago, so are in need of being replaced.

In addition we continue to offer our free 'Whispering Trees' trail talks - see photograph - which are led by our local friendly 'wood-sprite' Jools! We had two more 'shows' on Saturday April 18th, as part of the National Day of Action for nature, parks and green spaces, designed to influence decision-makers in Government to take green spaces more seriously. More details are on our website.

Our involvement with the 'Wild East' project is also taking off. In conjunction with the Council and others, we and five other 'greenspace' groups have been awarded a lottery grant to enhance the appreciation and use of "Whitehawk's Hills" and the Neolithic site at Whitehawk Camp. Planning on improving access and information is now under way.

Meanwhile 'Wild East' continues to offer monthly walks around these hills for local residents - we had an excellent walk down Sheepcote Valley one clear, crisp March night and were treated to an explanation of the night sky from an expert. More walks are planned – see the East Brighton Green Spaces 'Wild East' website at <https://wildbrighton.org/wildeast/>

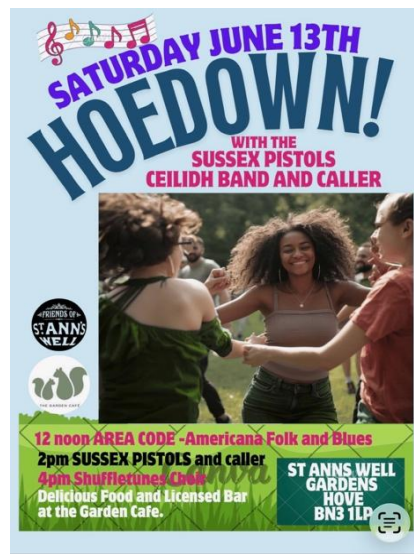
Alan Cooke.

<http://friendsofcravenwood.org.uk/>

ST ANN'S WELL GARDEN

Our optimism last year over promised repairs to the Park's pavilion and to our much-needed pond pump have again been dashed. The wheels of Council promises to carry out this much needed work, grind frustratingly slow. We are left ramping up the pressure wherever possible.

Spring however is a lovely time with new life all around. It's a busy time too with our calendar of wildlife and events filling up fast. The dawn chorus walk at 4.30 am is always popular and at the other end of the day our bat walk fills up as soon as it's advertised. Look out on-line for a full programme of birdsong, tree, birdwatching and butterfly walks over the coming months.



Art in the Park in May sees more than 30 artists and makers setting out their gazebos as part of the 7 Dials Artists Open House trail. With live music and dancing it is always a lively weekend – a lot of work but fun too. For more art inspiration local artist Shelley Morrow, is tutoring a Walk and Draw workshop on June 6th.

A new event this year is a Hoedown on June 13th with the Sussex Pistols Ceildh Band and Caller. We will be hoping for good weather and lots of people to join in the dancing and jollity.

Creating events and activities in the park is at the heart of what the Friends do, making it a welcoming and inspiring place for local people and visitors to enjoy.

KEEP THE RIDGE GREEN (Green Ridge)



The Green Gym were active again on The Ridge on Thursday April 4th planting 75 native whips and bushes at the far end of Windmill Drive. A good start to 2026, we are grateful to the team effort and support given to Keep The Ridge Green.

ST PETER'S CHURCHYARD VOLUNTEERS, PRESTON PARK

With everything coming to life, Spring is a wonderful time to be gardening in St Peter's Churchyard. But not all volunteer days are the same. On Thursday 19th March whilst planting some Rose Campion plants against one of our churchyard walls, we made a grim discovery..

Being so close to the surface, we initially thought the bones must be animal. But we weren't sure so sought advice from one of our volunteer's daughters who is a vet. After much discussion and measurement, we became pretty certain they were human remains (Femur and Radius bones). On the advice of the church, we reported the find to Sussex Police.

The Police response was fast, first they asked for photographs, then they asked to meet us on site straight away. On seeing the bones, they sealed the site and kept watch over them. Formal statements were required from all of those who had been involved in their uncovering. Police Officers stayed on site overnight. The next day specialists arrived to further excavate and forensically examine the find.



By the end of the day their conclusion was that what we had un-earthed were ancient bones and therefore not of any further interest. Emma our local vicar was contacted and the bones signed over to her for safe keeping (currently under the altar in St Johns Church in Knoyle Road). Emma has asked that we dig a suitable hole for them to be re-buried at St Peter's churchyard, she is planning to say a few appropriate words when this happens.

What we learnt from this experience was the importance of not further disturbing a site if remains of this type are uncovered. If remains are suspected as being human, they must be left and not moved. The Police should be called such that they can fully investigate the scene. Only after they have concluded their investigations can normal gardening activity continue.

LONDON ROAD STATION PARTNERSHIP

Developing a 'weedy' pocket park at London Rd Station!

At London Rd Station, we've been given permission to turn a small slither of waste land into a pocket park with a 'urban wild flower' theme. It's a challenging site, under the shade of large sycamore trees and originally covered with brambles. It was used as a dump for building materials and other junk; we've cleared out sacks of hardcore, cans, bottles, even pillows and... half a car bonnet!

As part of *Grow Wild on the Railway*, a scheme financed by Kew Gardens, two young artists - Esther Lower and Mia Jones - painted an old shed in the pocket park with wildflower motifs inspired by an art workshop with us gardeners.





With a very limited budget, we decided to pursue the 'wildflower' theme, and plant up the area with ... weeds. I am now calling them 'urban wild flowers': we have collected our urban wild flowers from shady areas along our pavements and in our own gardens. Among them, green alkanet, herb robert, blue and white comfrey, forget-me-not, sweet woodruff, bluebells and primroses ... they make a rather attractive display. We've also sown specialist wildflower seeds for chalk and shade. We hope to open the pocket park and its 'specimen beds' of pavement weeds for the Brighton and Hove Community Gardens Network in June.

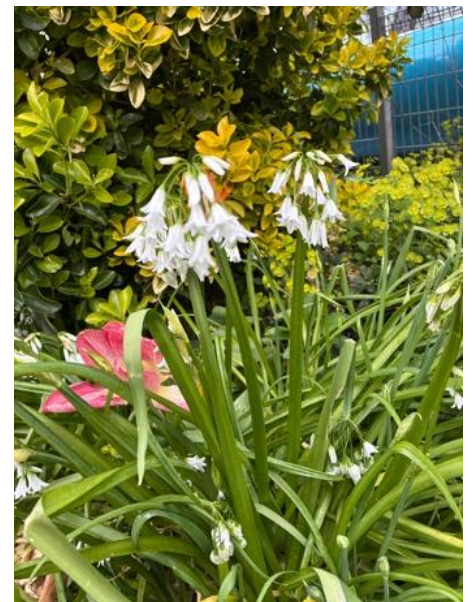
Elsbeth Broady, London Rd Station Partnership Contact elsbeth_broady@msn.com
 Photo of shed by Esther Lower

NORFOLK SQUARE GARDENING PROJECT

Three-Cornered Leek (*Allium triquetrum*) “Snowbell”- a cautionary tale!

Such a pretty flower – it looks a bit like a tall sturdy snowdrop, with fresh looking green leaves, appearing early in the spring and carrying on flowering well into May, filling lots of dark and otherwise weedy gaps. BUT, in Norfolk Square, and I’m sure all over Brighton, we have realized what a menace it can be! It’s a member of the Allium family, edible, and with a strong smell of garlic/onion. It is illegal to propagate it in the wild, and we are asked not to put it in compost bins as it is SO prolific.

Every year since volunteers started planting in Norfolk Square we have added more spring-flowering bulbs, and we do get a lovely colourful Spring show. But increasingly we find that the “Snowbell” is dominant, crowding out the daffodils, tulips and bluebells, smothering the little crocuses, anemones and scilla, leaving no light for the emerging perennials and self-seeded wildflowers.



So this year we have been making a concerted effort to get as much of the Leek out as we can, while it is in flower, and easier to distinguish from other bulbs – especially the very similar bluebells. It’s hard, smelly work! It spreads both by seeds and bulb division, so if you pull up a bunch of plants, finding the stems looking like spring onions, the bulbs (more like cocktail onions) are still in the ground! And when pulling them out, we have pulled out quite a few of the other bulbs we want to keep! Fingers crossed they survive being replanted. So far we have filled three hefty bags with smelly plants and bulbs, but we know we haven’t got it all (or even nearly!) and will have to come back to it again next Spring. Wish us luck!

We held our plant sale on April 25th. We are holding The Robin Hood Street Party on May 3rd and our Plant Sale on June 6th. Norstock Music Festival is on July 4th and planning already for our Christmas Party on December 4th!

STANFORD & CLEVELAND COMMUNITY GARDEN



We were very fortunate to receive a generous donation of wood chippings from the Arboriculture team while they were pruning trees along our road. A group of volunteers spent the morning removing the old path coverings and replacing them with fresh chippings. Although it was hard work, the results have made a big difference. The old chippings have been repurposed as mulch around the garden, ensuring nothing goes to waste.

Another exciting development has been the creation of a small wildlife pond, made from an old sink, in the church grounds opposite the garden where our compost heaps are located.

We're planning further planting and seed sowing in this area to encourage wildlife and support pollinating insects. In addition, we're building a dead hedge to provide a valuable habitat for a range of species.

After a long, wet winter, it's been a real joy to return to the garden regularly and make the most of the sunshine. Over the past few months, we've been hard at work tidying the space and planting a variety of crops, including sweet peas, runner beans, potatoes and sowing seeds for carrots, beetroot, sunflowers, and wildflowers, all of which we're looking forward to seeing flourish in the months ahead. We have also been growing a range of plants especially for our **Annual Plant Sale to be held on 16th May** which is our major fundraising event for the year.



We're also delighted to be taking part in the Brighton & Hove Community Gardens Network's 'Routes to Roots' open gardens trail in June. It's a wonderful opportunity to showcase the garden and connect with the wider community. Details of participating gardens and opening times can be found on the Brighton & Hove Buses website, our event sponsors.

<https://www.buses.co.uk/routes-to-roots>

Looking ahead, we're expecting a visit from one of the South and South East in Bloom judges in June or July, and we're hopeful for another positive result this year!

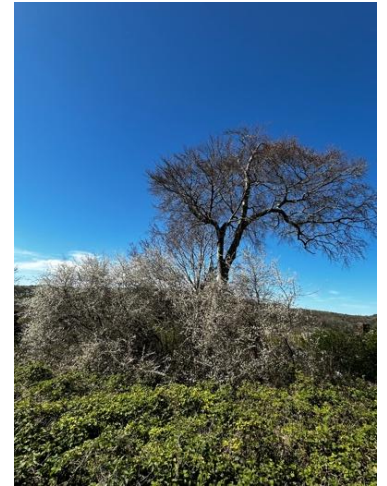


FRIENDS OF HODSHROVE WOODS

Hello! We are the Friends of Hodshrove Woods, a small group of local volunteers coming together to care for our little patch of woodland. Hodshrove Woods is a little known, ½ km patch of woodland hidden away on the Moulsecoomb estate.

We first met in June 2025 concerned that the wood was neglected and becoming a bit of a dumping ground, instead of being cared for and enjoyed as a peaceful natural space. We started by trying to understand a bit more of the history, and to map what kind of habitat we already had on our doorstep. We think it dates back to Hodshrove Farm which is known to have existed from 1086!

Although at first glance the wood is very sycamore-heavy, there is far more hidden away – ash, beech, blackthorn, alder, holly, and literally hundreds of wildflowers. Once we started noticing we couldn't stop!



We were really lucky that Brighton Permaculture Trust were already in the process of planting some fruit trees on the site, so we were thrilled to take part in a tree planting day in February, and at the moment we are very focussed on caring for our 10 baby trees, which are all doing well.

We meet on the first Saturday of every month, 2-4, to care for the trees, litter pick, tidy, and weed-clear. Longer term we'd like to continue to create some nature trail pathways, and start some bee-friendly planting to brighten up the playground next door. We always welcome new volunteers – if you're in the area please join us! Find us on Facebook at

<https://www.facebook.com/p/Friends-of-Hodshrove-Woods-61578596768633/>

RACEHILL COMMUNITY ORCHARD

A lot has happened at Racehill Orchard these past couple of years. During 2025 we collaborated with the Trust for Developing Communities (TDC) group which involves the local community around East Brighton. Several events happened including our first Wassail with Brighton Morris. During that year we had a compost toilet installed. We also built a dead hedge around the pond.



This year, the volunteers removed all the plastic tubing from the shelter belts trees and removed a lot of posts and chicken wire from the larger fruit trees. Following permaculture principles of minimum waste, we repurposed the stakes and constructed a set of composting bays.

Since our involvement with TDC, so many more people and families have been visiting the Orchard and really enjoying the free fruits especially last summer when we had an absolute bumper harvest.

THE WILDFLOWER CONSERVATION SOCIETY (WFCS)

January was a quieter month as it always is. It was wet and stormy but we got together at the end of the month for the BHGSF meet-up and our Lindy gave a short talk about what the WFCS does.



February was a bit busier. On the 1st we had a stall at **Seedy Sunday**. This was great for our profile we did well with sale. In October 2025 we were nominated for the **Kings Award for Voluntary Service (KAVS)** and two assessors came to suss us all out. We were seen as good contenders for this prestigious award - let's wait and see! I went up to look out a hedge for the **'Hedgerow in the Sky'** display that is showing on a balcony at RHS Chelsea this year, see at <https://www.rhs.org.uk/shows-events/rhs-chelsea-flower-show/gardens/2026/hedgerow-in-the-sky>. In addition to us helping with the hedge, they are also using some of our WFCS wild flowers. **Cllr Tim Rowkins** came along to collect some Round-headed Rampions to go to the Knepp Estate. **CSA Environmental** who generously gave us a grant in 2025, came for a day to help clear the new site. It was great fun, they are planning to a run an ecological field day and more... Lindy gave a talk to the **Patcham Gardening Network**. A great group and it was well received.



March finally finished the hedge and its bindings (thanks Jenny & Sally). The RHS Chelsea hedge stand designers are hoping for the hawthorn to be out for all to see. Lots of sowing our local collected seed and potting on of our wild flowers for sales. Sadly **John Gapper**, our founder, died. He will be much missed by many and not least by all the wild flowers he helped conserve.



April was again a busy month sowing and potting with a sense that the gardening and conservation world was waking up and coming along to our polytunnel. The Garden Designers at Plumpton College have been asked to design our new garden as part of their coursework and I went along to give them some ideas. South Downs National Park's Nick Heason came to collect 20 Rounded Headed Rampions for the rewinding project at Halnaker Farm

We are going to run a **Plant Sale Sunday on the last Sunday of the month** up until October. So come a see us at the Wild Flower HQ in Stanmer on Tuesdays 10am till noon and on the last Sundays 1pm till 3.30pm.



WILDFLOWER PLANT SALE

LAST SUNDAY OF EVERY MONTH
1pm - 3.30pm

WFCS Polytunnel
Stanmer Park, Brighton

Follow Plant Sale signs via the Patchway overflow car park.



LARGE SELECTION OF PLANTS ONLY £2 EACH!

PLEASE HELP TO SUPPORT US AND PLANT WILDFLOWERS TO BRING MORE POLLINATORS AND BEAUTY TO YOUR GARDEN!

If you can't make it, you can buy plants from us any TUESDAY, 10am - 12 noon

www.wildflowerconservationsociety.com

WHAT 3 WORDS: fingernails.pets.wanted



Thanks to all our lovely volunteers and supporters. Truly without you none of this is possible.

Paul Johnson - Chair WFCS - <https://www.wildflowerconservationsociety.com/>



Nominees

FRIENDS OF BEACON HILL

During the spring the Friends of Beacon Hill installed new information boards on and around Beacon Hill. The old wooden boards had deteriorated badly, so we now have metallic weatherproof information panels. We have taken the opportunity to improve the layout of the boards and update the information they contain, including a section on helping protect local wildlife.



We are very grateful to Rottingdean Parish Council for a grant which has allowed this work to take place. We would also like to thank the CityParks Ranger team for their assistance in installing the new boards. We will now be undertaking regular checks to ensure the new boards remain in good condition.

We have set up a working group is looking into how our local skylark population can be maintained. Sadly, the UK skylark population fell by 63 per cent between 1970 and 2023. The skylark is now on the UK Red List, which means that its survival is a national cause for concern. One area of focus is ensuring nesting birds are not disturbed by dogs during the breeding season. It is planned to erect new signs at all access points to Beacon Hill. The signs will remind people of the legal requirements in the Countryside Code for use of Open Access land. Between 1 March and 31 July, dog walkers must have their dog on a 2m lead even if there is no livestock on the land.

You can contact us at FOBeaconHill@gmail.com For up to date info. see our Facebook page at <https://www.facebook.com/beaconhillrottingdean/>

BRIGHTON & HOVE WILDLIFE FORUM



7th June 2026 - Join us for walk around some beautiful chalk downland just on the edge of Brighton to hunt for chalk downland flowers both common and not so common. We will meet at **10am at Castle Hill carpark just north of the junction of Falmer Road (B2123) and Bexhill Road in Woodingdean.** (What3words [sundial.blotting.kipper](https://www.what3words.com/sundial.blotting.kipper). Coordinates 50.84° N, 0.07° W).

The carpark is on the right going north up Falmer Road from the Downs Hotel. Bus number 22 leaves Churchill Square Stop C4 at 9.13am and the Royal Pavilion Stop R2 at 9.17am, will arrive at the Downs Hotel at 9.34am giving you plenty of time to walk up the Falmer Road to the car park. From the car park we will walk to Castle Hill National Nature Reserve. We will picnic on the hill so please bring a packed lunch with you as well as some drink. There are no facilities on the reserve, but there will be the opportunity for a pint at the Downs Hotel at the end of the walk.



After lunch we have several options for a route back to the car park and will depend on what we have already found. Buses return to Brighton from opposite The Downs Hotel approximately every 20 minutes on Sundays. The walk is about 5 miles with some uneven ground and steep slopes both up and down so wear stout shoes and suitable clothing, including waterproofs if rain is forecast, suncream and a hat if it is hot. Bring any flower books you have to share.

Advance booking required by email to bbas79@outlook.com. NO DOGS please btnhovewildlife@gmail.com

FRIENDS OF HOLLINGBURY & BURSTEAD WOODS

We have had a very busy winter and early spring, planting over 120 whips (sapling trees), 15 Field Maple whips from Stanmer's Special Branch – see at <http://www.specialbranchtrees.org.uk/> and in collaboration with Brighton Permaculture Trust, our volunteers also planted 30 standard fruit and nut trees on the edge of Hollingbury Wood to create a new community orchard.

Photograph shows the New Community Orchard adjacent to Hollingbury Woods, east of Ditchling Road.



Our planting bonanza began on a very wet day in December when more than 30 hardy souls joined us on our Community Tree Planting Day to plant the whips, which were kindly supplied free of charge by the Woodland Trust. Needless to say, watering them in was not required! At the end of February, Brighton Permaculture Trust demonstrated best practice for planting the standard size fruit and nut trees, and we came together again during our March work session to complete the planting. All the trees are now in leaf, with several already in blossom. Brighton & Hove City Council has secured funding to water and maintain the trees for the next two years.

Photo shows one of several Apple trees planted in collaboration with the Brighton Permaculture Trust – see at <https://brightonpermaculture.org.uk/>

We also planted Field Maples in the woods to offset the loss of our Ash trees that succumbed to Ash Dieback and moved two Holm Oaks that mysteriously appeared in the woods to a more suitable area where their ultimate huge size won't shade out more suitable species. We are sure people mean well but planting without consulting us can cause problems. Another problem we have noticed is a patch of Japanese Knotweed on the edge of the woods: we have reported this to our Ranger to deal with.

Gill Taylor – Secretary

<https://www.facebook.com/FriendsofHollingburyandBursteadWoodsinBrighton>

FRIENDS OF PRESTON PARK

In the Autumn we continued the refurbishment of the Rose Garden, replacing 110 roses. The replanting was made possible owing to the generosity of David Austin, the rose grower, who donated most of the roses. FoPP purchased a new variety, the King's Rose, as well as Buckingham Rose Soil from Bury Hill Landscape Supplies in Horsham to provide the roses with the right planting conditions. In March we applied a fertiliser supplied free of charge by David Austin and in April FoPP purchased 20m³ of mulch.



Our pruning skills improved as volunteers were treated to two complementary David Austin pruning workshops, gleaned as well much information on how to look after roses all year long. The neglected herbaceous borders in The Rose Garden have been re designed and replanted with plants grown by volunteers and many given by the National Trust. We are very grateful to our Ranger Neil Doyle's strong team of CityParks Ranger volunteers who helped us plant the roses, digging through tough clay and chalk and then mulched the rose beds.

The Rotunda Pond had been leaking for years so FoPP put time and money into its repair. The work started in 2024 and as we had to take into consideration the amphibians' living habits and the rainy weather, it took nearly two years to complete. The pond was cleared of the weeds, cleaned, re rendered, re sealed, the silt was returned and then the pond was filled with water from the Wellesbourne river. The quality of the water was tested in April by the University of Sussex and it has a 96% Oxygen rate. Water plants were added and the newts and tadpoles are thriving. The work was undertaken by FoPP volunteers, assisted by James Newmarch from Brighton & Hove Wildlife Forum.



The Rose Garden was granted Level 5 - Outstanding at the SSEiB 'Its Your Neighbourhood' Awards last year. A great accolade and entirely thanks to the volunteers who turn up every Tuesdays to weed, water, prune, deadhead, feed and mulch the roses. Our team is 20 strong and growing!

If you would like to do some gardening with our team, please come to the Rose Garden on Tuesdays 10am-1pm.

friends of
Preston
Park

EASTBROOK COMMUNITY GARDENERS - The Birch Tree Project

Our Birch Tree Project has been busy moving from the Secret Garden in Fishersgate Shark Park over to our new Tree Nursery Space behind the tennis courts at Southwick Recreation Ground.

We're now in the process of getting the site ready and arranging rainwater capture from the Southwick Leisure Centre roof! We plan to become a CIC called 'The Treecycle Project' as we now have Rowans, Hornbeam, Hazel, Oak, Scots Pine as well as Birch in our collection of trees. Almost 200 tree saplings are in my garden awaiting rehoming. They have been potted on and looked after by us for over a year now and have really good root systems and are looking lovely.

We had the pleasure of recently supplying some of our biggest trees to the prestigious Architectural Plants Nursery, Pulborough who bought 26 saplings. If you would like a tree do drop us a line on thebirchtreeproject@gmail.com or message us on our Facebook Page: [The Birch Tree Project](#). Prices £20 up.

Carol Springgay



REPLACING THE LOST TREES OF FLORENCE ROAD

In 2025 Florence road lost many trees due to disease. This had a major impact on the street and on the residents, therefore the residents looked into the CPRE guidelines and decided to have a collective action to raise money to contribute to the planting of new trees (see earlier CPRE 'Plant Your Postcode' article).

Once money was raised and the Council agreed to part fund the project, two trees were replaced in Winter 2025. For this purpose stumps had to be removed, the pavements re-laid, a tree pit built and finally the trees were planted and mulched.

The species chosen from a list supplied by the Arboriculture team are Ginkgo Biloba and Tilla Cordata Rancho (lime). Six more trees need replacing in the street and we hope our project will be considered for some



Visit our website www.florenceroad.org for updates and sign the petition to the Council to address the 'missing trees' - the more people who sign this the more influence we will have with the Council. If you wish you can support us by donating on our GoFundMe page <https://www.gofundme.com/f/replacement-of-felled-trees-in-florence-road>

FRIENDS OF EAST BRIGHTON PARK

Community Fun Day – Sunday 10th March



The poster features a green background with a rainbow logo above the text 'Our Place All Welcome!'. A blue circle with 'FREE' is to the right. The main title 'Community Fun Day' is in large red letters, followed by 'Sun 10 May 2026, 12-4.30pm' and 'Between Crew Club and Middle Park'. A collage of photos shows people at various activities. A purple circle says 'Celebrate 10 YEARS with us'. At the bottom are logos for DF, Brighton & Hove City Council, Arts Council England, and Pembroke, along with a thank you message to the Chalk Cliff Trust, the Pebble Trust, and Big Give Arts for Impact donors.

Our Place All Welcome! **FREE**

Community Fun Day

Sun 10 May 2026, 12-4.30pm
Between Crew Club and Middle Park

• Live entertainment, music, sports & games, nature play, dressing up, art & craft workshops, badgemaking

Plus

- Sharing of land art made by local children and adults
- FREE Barbeque courtesy of Bryan and the East Brighton Food Co-op
- Local artists and organisations including Woolly Umbrella
- Indoor and outdoor

Our Place: Brighton Dome & Brighton Festival in Our Community

DF Brighton & Hove City Council ARTS COUNCIL ENGLAND Pembroke

Thank you to the Chalk Cliff Trust, the Pebble Trust and all our Big Give Arts for Impact donors

The Community Fun Day will take place between Crew Club - 26 Coolham Drive Brighton BN2 5QW & Middle Park in Whitehawk, Brighton (a recently improved playground located on Whitehawk Way, situated behind St Cuthman's Church).

If anyone would like to have a stall please DM Maggie Anderson
<https://www.facebook.com/maggie.anderson.7399>

It will be a lovely day with poetry, local archaeology, primitive pottery, ArtClub, Woolly Umbrella group and free BBQ.